

MDT-25K PLANETARY DRIVE - two speed

Pengo Part No. 660839 auto shift (25K, Closed Bail 45mm)

Torque / Speed Chart

Reference Torque Chart (HT/LS)

Pressure (psi)	Torque (ft/lb)
1000	8262
1200	9915
1400	11567
1600	13220
1800	14872
2000	16525
2200	18177
2400	19830
2600	21482
2800	23135
3000	24987

Reference Torque Chart (LT/HS)

Pressure (psi)	Torque (ft/lb)
1000	4131
1200	4957
1400	5783
1600	6610
1800	7436
2000	8262
2200	9088
2400	9915
2600	10741
2800	11567
3000	12393

Reference Speed Chart (low)

Flow (gpm)	Speed (rpm)
20	7.42
25	9.27
30	11.13
35	12.98
40	14.84

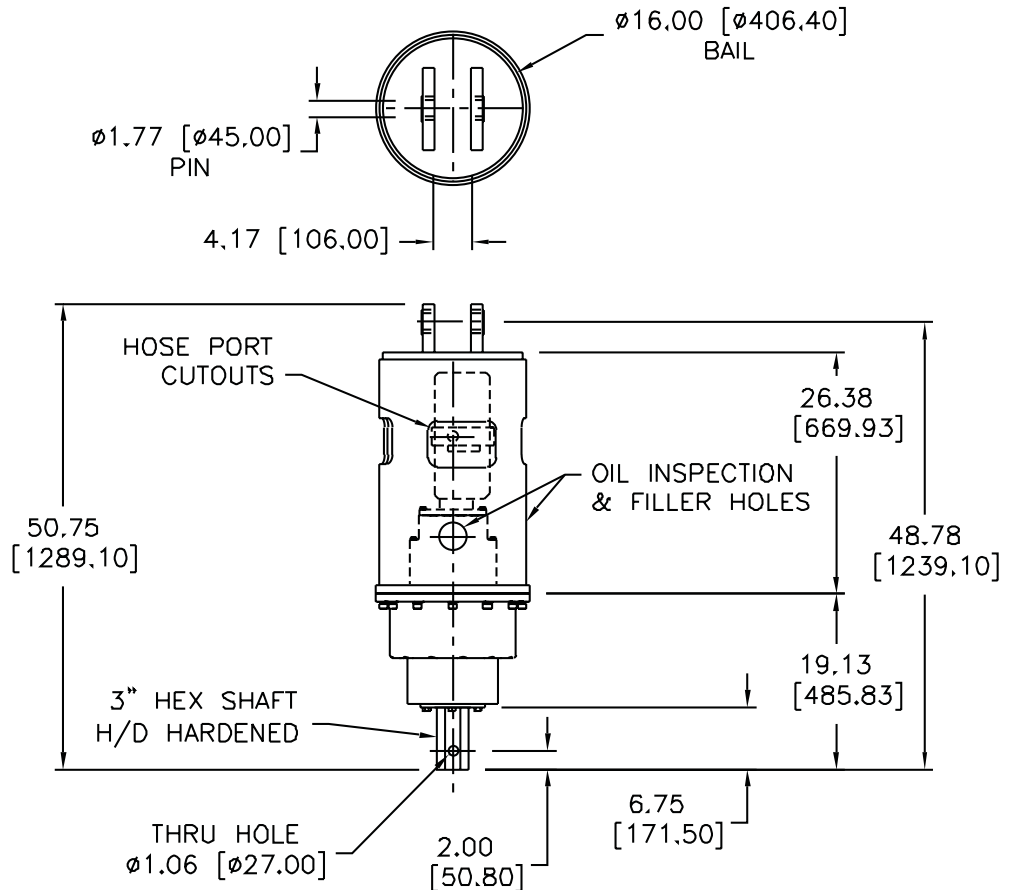
Reference Speed Chart (high)

Flow (gpm)	Speed (rpm)
20	14.84
25	18.55
30	22.26
35	25.96
40	29.67

TECHNICAL SPECIFICATIONS

Motor Mount:	SAE "B" 4 BOLT
Motors:	TWO SPEED
Rated Output Torque:	25,000 / 12,500 FT-LB (27,000 / 13,500 N-m)
Maxi System Pressure:	3,00 psi (206 bar)
Max Flow:	40 GPM (151 lpm)
Output Shaft:	3" Hex Shaft (HARDENED)
Shaft Pull-Out Load:	60,000 lb (27,000 kg)
Shaft Pressure Load:	60,000 lb (27,000 kg)
Oil Capacity:	15.2 pts (7.3l)
Weight:	639 lbs (290 kg) with Hydraulic Motor
Gear Ratio:	52.33:1

Output speed and torque specifications are based on theoretical 100% values and are provided for comparative purposes only.



Note: MDT Units do not require a case drain.

MDT Units must have a minimum of 20GPM to operate properly.



500 E. Highway 10, Laurens, IA 50554 - 800.599.0211
 email: pengosales@paladinbrands.com www.pengoattachments.com